

535w~555w

M10 solar modules Aquaman series
Mono MBB per large size half cut module

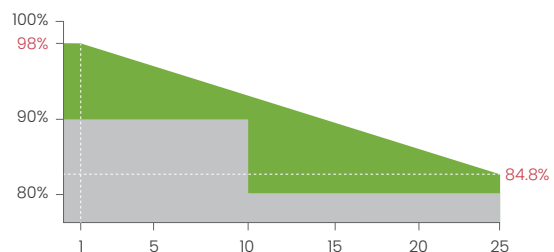
Excellent technical advantages and system design scheme to achieve high reliability, power generation effective gain and EPC cost reduction. Products can match different installation conditions, taking into account high adaptability and high compatibility. With mature support and inverter scheme, customized design for industrial and commercial and centralized ground power stations.

MODULE CHARACTER

-  PID Resistance
-  Salt mist resistance/Ammonia resistance /dust and hail resistance
-  Production process reliability test
-  0~+5W Positive Tolerance
-  Mono MBB half cut
-  Reduce BOS cost increase ROI
-  Non-destructive cutting

CERTIFICATION

IEC61215/IEC61730
 ISO9001:Quality Management System
 ISO14001:Environmental Management System
 ISO45001:Occupational Health and Safety Management System



Linear performance warranty



Product warranty

Official Distributor



P.I. Riu, Cno. del Riu, s/n
 03420 Castalla (Alicante) Spain

Phone 965 560 025 / 671 680 080

bornay@bornay.com
www.bornay.com

Module Type	SR-72M535HLPro		SR-72M540HLPro		SR-72M545HLPro		SR-72M550HLPro		SR-72M555HLPro	
Module Efficiency (%)	20.73		20.93		21.12		21.31		21.51	
Tolerance (W)	0 ~ +5		0 ~ +5		0 ~ +5		0 ~ +5		0 ~ +5	
Test Environment	STC	NOCT	STC	NOCT	STC	NOCT	STC	NOCT	STC	NOCT
Maximum Power Pmax(W)	535	398.16	540	401.88	545	405.61	550	409.33	555	413.05
Open Circuit Voltage Voc(V)	49.18	46.42	49.34	46.58	49.5	46.73	49.65	46.87	49.81	47.02
Short Circuit CurrentIsc(A)	13.87	11.20	13.96	11.27	14.04	11.34	14.13	11.41	14.21	11.47
Maximum Power Voltage Vm(V)	40.6	37.77	40.73	37.89	40.86	38.02	40.99	38.14	41.12	38.26
Maximum Power CurrentIm(A)	13.18	10.54	13.26	10.60	13.34	10.67	13.42	10.73	13.5	10.80
Cell Type (mm)	MBB-182×91mm(Mono-Crystalline Silicon)									
Number of Cells (Pcs)	144(6×24)									
Maximum System Voltage(V)	DC1500									
Temp.Coeff.of Voc (%/°C)	-0.282									
Temp.Coeff.of Isc (%/°C)	0.05									
Temp.Coeff.of Pm (%/°C)	-0.348									
Operating Temperature(°C)	-40 to 85									
Nominal Operating Cell Temperature(NOCT) (°C)	45±2									
Max.Series Fuse (A)	25									
Pressure Bearing (Pa)	5400									
Wind Bearing (Pa)	2400									

STC: Irradiance 1000W/m², Cell temperature 25°C, AM1.5
 NOCT: Irradiance 800W/m², Ambient temperature 20°C, Wind speed 1m/s

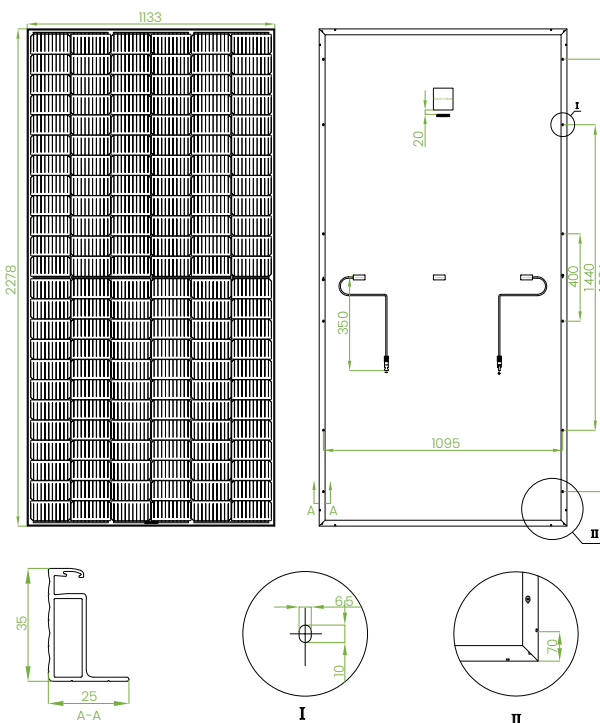
MATERIAL DETAILS

Frame	Anodized aluminum	Glass	Single glass, 3.2mm coated tempered glass
Cell	6×24pcs mono solar cell	Junction Box	IP≥68, TÜV & UL
Diode quantity	3	Cable&Connector	4mm ² , EVO2 or EVO2 compatible
Net length of Cable	350mm or as customer's requirements		

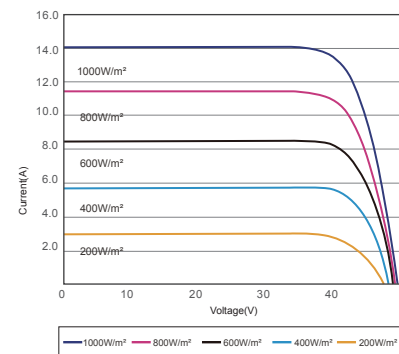
PACKING DETAILS

Dimension	2278×1133×35mm	Weight	28kg
Loading Capacity	620pcs/40HC	Packing	31pcs/pallet

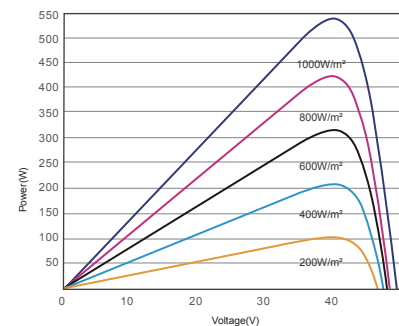
ENGINEERING DRAWINGS



IV CURVES



I-V CURVES OF PV MODULE(545W)



P-V CURVES OF PV MODULE(545W)