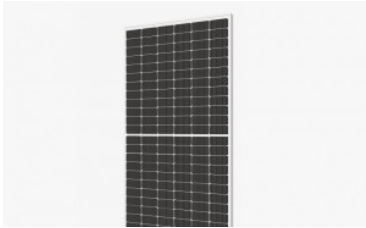
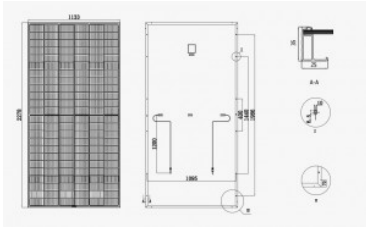


SR-72MHLPRO MONO

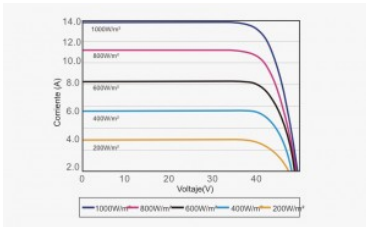
Sunrise Energy Co., a Leading PV Company in Solar Panel Manufacturing ,Solar Project Investment and Solar System Integration.



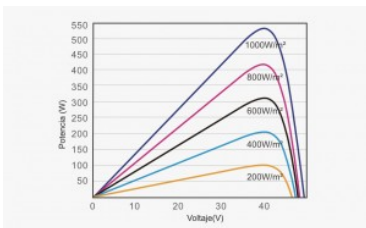
Panel Sunrise SR-72MHLPro



Panel Sunrise SR-72MHLPro



Panel Sunrise SR-72MHLPro



Panel Sunrise SR-72MHLPro

Product advantage of Sunrise Energy SR-M672HLPro solar modules:

- 0 +5 W positive tolerance guarantee
- The use of high light transmission and reflection reduction 3.2mm glass, low light environment electric performance is stronger
- PID attenuation can be minimized under conventional conditions
- TUV test certification
- The Half cut cell size M10 is 182 x 91 mm, and using Multiple Bus Bar, which can eliminate the chamfering loss of single crystal



Hight Power Output.



Better Low-Light performance..



MBB Half Cut Cell with PERC Technology



Less Shading Effect



0 + 5 W Positive Tolerance



PID Resistance

SPECIFICATIONS

	SR-M72HLPPro 550 W	SR-M72HLPPro 560 W	SR-M72HLPPro 570 W	SR-M72HLPPro 580 W	SR-M72HLPPro 585 W
Number of cells	144 (6 x 24)				
Cell type	M10 Monocrystalline - 182 x 91 mm (Multiple Bus Bar)				
Maximum system voltage	1500 Vdc				

Electrical Specifications *

		STC *	NOCT **	STC *	NOCT **	STC *	NOCT **	STC *	NOCT **	STC *	NOCT **
Maximum power	Pmax	550 Wp	409,33 Wp	560 Wp	422,50 Wp	570 Wp	430 Wp	580 Wp	437,50 Wp	585 Wp	441,30 Wp
Tolerance		0 / +5 W		0 / +5 W		0 / +5 W		0 / +5 W		0 / +5 W	
Maximum power voltage	Vmpp	40,99 V	38,14 V	41,75 V	39,18 V	42,07 V	39,48 V	42,39 V	39,78 V	42,55 V	39,93 V
Open circuit voltage	Voc	49,65 V	46,87 V	50,53 V	48,27 V	50,92 V	48,64 V	51,31 V	49,01 V	51,50 V	49,19 V
Maximum power current	Impp	13,42 A	10,73 A	13,42 A	10,82 A	13,55 A	10,93 A	13,69 A	11,04 A	13,75 A	11,09 A
Short circuit current	Isc	14,13 V	11,41 V	14,17 V	11,44 V	14,31 V	11,55 V	14,46 V	11,67 V	14,52 A	11,72 A
Module efficiency		21,31 %		21,70 %		22,09 %		22,48 %		22,67 %	

Temperature Ratings

Open circuit voltage coefficient	Tk Voc	-0,249 % / °C
Short circuit current coefficient	Tk Isc	0,045 % / °C
Power coefficient	Tk W	-0,300 % / °C
Operating Temperature	NOCT	45 °C ±2 °C

Other specifications

Dimensions	2278 x 1133 x 35 mm
Weight	28 Kgr.
Connection box	IP67 - 3 diodes Junction box
Cable	Cable 4 mm2 - 1200 mm
Connector	MC4 or MC4 compatible

* STC (Standard Test Conditions: 1000 W/m2, 25° C, AM 1.5)

** NOTC (Normal Operating Test Conditions: 800 W/m2, 20° C, Windspeed 1 m/s)

DOWNLOADS

SR-M672HLPPro CATÁLOGO BORNAY

 [SR-M672HLPPro Catalogo Bornay.pdf](#) Size: 1.64 MiB

SR-M672HLPPro BROCHURE BORNAY

 [SR-M672HLPPro Brochure Bornay.pdf](#) Size: 1.65 MiB

IEC 61701 CERTIFICATE

 [IEC 61701 Certificate.pdf](#) Size: 148.42 KiB

IEC62716 CERTIFICATE

 [IEC62716 Certificate.pdf](#) Size: 147.28 KiB

IEC60068-2-68 CERTIFICATE

 [IEC60068-2-68 Certificate.pdf](#) Size: 150.91 KiB

PID IEC62804 CERTIFICATE

 [PID IEC62804 Certificate.pdf](#) Size: 149.47 KiB

HLPPro SERIES TUV+CE CERTIFICATION

 [HLPPro Series TUV+CE Certification.pdf](#) Size: 1.5 MiB